

MILWAUKEE BALLET

MICHAEL PINK
ARTISTIC DIRECTOR



IMPACT REPORT ♀ 24/25 SEASON



BAUMGARTNER CENTER FOR DANCE

128 North Jackson Street
Milwaukee, Wisconsin 53202

Reception: 414-902-2100
connect@milwaukeeballet.org

www.milwaukeeballet.org

BOX OFFICE

Office: 414-902-2103
tickets@milwaukeeballet.org

DEVELOPMENT OFFICE

Office: 414-902-2135
development@milwaukeeballet.org

SCHOOL & ACADEMY

Office: 414-902-2150
mbsa@milwaukeeballet.org

Riverpoint Village Branch

8665 North Port Washington Road
Fox Point, Wisconsin 53217
Direct: 414-902-2140

Towne Centre Branch

3815 North Brookfield Road, Suite 201
Brookfield, Wisconsin 53045
Direct: 414-902-2145

All photos by Rachel Malehorn
unless otherwise noted.

COVER: Randy Crespo & Lahna Vanderbush in *Casanova*.
ABOVE: Jacqueline Sugianto & Flynn Stelfox in *In The Dark*. Photo Nathaniel Davauer.

2024/25 SEASON

When we christened our 2024/25 Season *Love & Lust*, it was about far more than the sensational: it was about duality, the sense that a single experience can be dramatically multifaceted. This past year has embodied that in every way, with one thing remaining ever-true—the passion we all share for the power of dance.

This year’s performances ranged from ultra-classical to cutting-edge modernity, all performed at the highest caliber by our international Company of Artists. Two Midwest debuts bookended the lineup: Kenneth Tindall’s *Casanova* to open our season and Mark Godden’s *Carmen*—along with *In the Dark*, the world premiere by last season’s *Genesis* winner Tsai Hsi Hung—to end it. We homed in on hometown talent in *MKE MIX*, with three of our own Company Artists choreographing works on their fellow dancers, while beloved tales of *The Nutcracker* and *Sleeping Beauty* saw over 150 Milwaukee Ballet School & Academy student dancers join our Company Artists and Milwaukee Ballet II trainees on stage.

Our School & Academy continued to thrive as new and returning students joined us, ranging in age from 2 to over 80. Over 640 students grew in technique and artistry during school year classes and performances, summer camps and classes, and our nationally-renowned Summer Intensive. Of special note are the five Pre-Professional Program students who were elevated into the MBII class of 2025, the most ever promoted in one year. We also saw rapid growth within our newly rebranded adult “Dance & Fitness” division thanks to expanded offerings such as Barre and Pilates.

This year, our Community Engagement programs once again reached thousands of constituents across a range of zip codes, tax brackets, and physical and mental capabilities. Cornerstone programs like Relevé and Student Matinees enjoyed continued success while new or revamped programs like Ballet Storytimes and short-term in-school residencies saw a renaissance of interest. The former were especially successful, with an average of over 75 attendees per library.

We are incredibly grateful to the entire Milwaukee Ballet team of artists, staff, faculty, musicians, and volunteers whose dedication and talents made all this possible. Additionally, it’s the ongoing support of our audiences, students and families, donors, sponsors, and partners who fuel our passion every day. Our sincere thanks go out to all who contributed to this season’s successes in ways big and small!



Michael Pink
Artistic Director



Tai Pauls
Managing Director &
Chief Advancement Officer



Cheryl Carron
President &
Board Chair



Marie Harrison Collins & Randy Crespo in *Sleeping Beauty*. Photo Iryna Levit.

LEADERSHIP

BOARD OF DIRECTORS

OFFICERS	DIRECTORS		EMERITUS
Cheryl Carron Board Chair & President	Irissol Arce	Beverley Morgan	Jane Bell
Christine Irgens Treasurer, Chair Elect	Donna Baumgartner	Molly Mulroy	Kathleen Allen Crocker
Sarah Thomas Pagels Secretary	Liz Bickley	Kelly Noyes	Sarah Damsgaard
Tai Pauls Managing Director & Chief Advancement Officer	Jon Biorkman	Jill Pelisek	Katie Heil
Michael Pink Artistic Director	Jason Eggert	Jan Pirozzolo-Mellowes	Justin Mortara
	Gretchen Jameson	William Raasch, MD	Jodi Peck
	Amy Schmidt Jones	Jodi Ristau	
	Sarah Kimball	John Rumpf	
	Suzanne Martens, MD	Yollande Tchouapi	

COMMITTEES

EXECUTIVE	COMMUNITY ENGAGEMENT	NOMINATING & GOVERNANCE	SPECIAL EVENTS
Donna Baumgartner	Liz Bickley Committee Co-Chair	Kelly Noyes Committee Chair	Kristyn Brenner
Liz Bickley	Sarah Thomas Pagels Committee Co-Chair	Donna Baumgartner	Darci Johnson
Cheryl Carron	Uniqua Adams	Cheryl Carron	Beverley Morgan
Christine Irgens	Jodi Ristau	Christine Irgens	Maxx Rodriguez
Kelly Noyes	Deana Velazquez	Sarah Thomas Pagels	Fran Sutter
Sarah Thomas Pagels	Linda Wade		Ashely Voelz
Jan Pirozzolo-Mellowes			
John Rumpf			
ADVANCEMENT	FINANCE	SCHOOL & ACADEMY	OPERATIONS
John Rumpf Committee Chair	Christine Irgens Committee Chair	Gretchen Jameson Committee Co-Chair	Suzanne Martens, MD Committee Co-Chair
Donna Baumgartner	Steve Beguhn	Kelly Noyes Committee Co-Chair	Molly Mulroy Committee Co-Chair
Jane Bell	Jon Biorkman	Elizabeth Drew	William Raasch, MD
Christine Irgens	Jason Eggert	Amanda Elliott	
Gretchen Jameson	Drew Feller	Amy Schmidt Jones	
Maxx Rodriguez	Jill Pelisek	Raquel Faria Moeller	
Cherie Paust Swenson	Jan Pirozzolo-Mellowes	Beverley Morgan	
		Brigid Wollersheim	

EMERGING LEADERS COUNCIL

Jason Eggert Council Co-Chair	Audrey Cook	Lauren Head	Eric Locker
Anna Jablonski Council Co-Chair	Carolyn Culea	Stephanie Hobbins	Kayla McCann
Hannah Chin	Jazmin Gonzalez	Jacob Kalashian	Ben Teich
	Sarah Gremontprez	Jessica Lawrence	Kacey Weiner



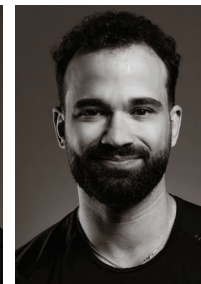
THE COMPANY



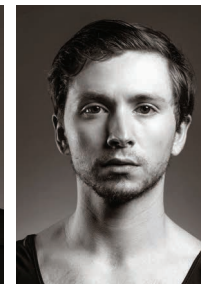
Parker Brasser-Vos
NEWYORK, NY
Leading Artist
Sponsored by Candy & Bruce Pindyck



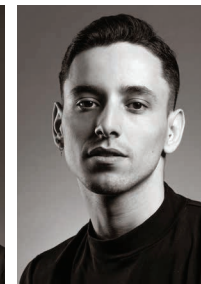
Josiah Cook
FLAGSTAFF, AZ
Artist
Sponsored by John P. Baumgartner



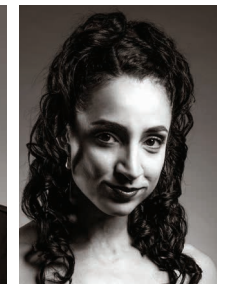
Randy Crespo
HAVANA, CUBA
Leading Artist
Sponsored by Katie Heil



Joey Dlearo
LOGANVILLE, GA
Artist
Sponsored by Kathleen & Frank Thometz*



Eric Figueredo
RIO DE JANEIRO, BRAZIL
Artist
Sponsored by Charles & Mary Ann LaBahn



Marize Fumero
HAVANA, CUBA
Leading Artist
Sponsored by Stanley Kritzik



Garrett Glassman
GURNEE, IL
Artist
Sponsored by Kathleen D. Ryan



Alana Griffith
LOS ANGELES, CA
Leading Artist
Sponsored by Tony & Andrea Bryant



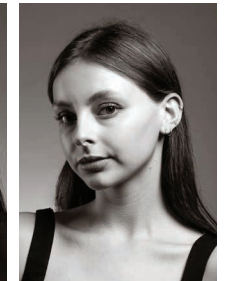
Marie Harrison-Collins
HONG KONG, CHINA
Artist
Sponsored by Richard & Kay Yuspeh



Alexander Koulos
SYDNEY, AUSTRALIA
Artist
*Sponsored by George Hanneman**



Amanda Lewis
AKRON, OH
Artist
Sponsored by Clair & Mary Baum*



Raven Loan
BAROSSA VALLEY, AUSTRALIA
Artist
Sponsored by Linda L. Sell, M.D.



Daniela Maarraoui
HOUSTON, TX
Artist
Sponsored by Barbara A. Mangiafico



Kristen Marshall
PLANTATION, FL
Artist
Sponsored by Robert C. Dohmen



Emery Meroni
TICINO, SWITZERLAND
Artist
Sponsored by Donna Baumgartner, Jim Caraway, Katie Heil, Justin Mortara, & Jodi Peck



Marko Micov
SKOPJE, NORTH MACEDONIA
Artist
Sponsored by Elizabeth & Frederic Friedman*



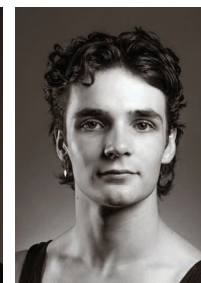
Barry Molina
BLOOMINGTON, MN
Leading Artist
Sponsored by William & Margaret Raasch



Nanaho Nakajima
OSAKA, JAPAN
Artist
Sponsored by Carla H. Hay



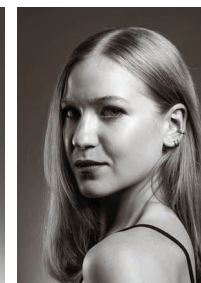
Troy Santulli
BOSTON, MA
Artist
Sponsored by Christine Radiske & Herbert Quigley



Flynn Stelfox
MELBOURNE, AUSTRALIA
Artist
Sponsored by Dick Kaul



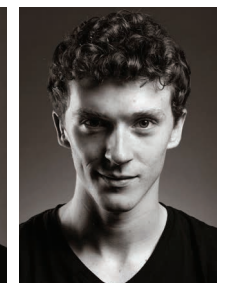
Jacqueline Sugianto
TORONTO, CANADA
Artist
Sponsored by Linda Fedorczak



Lizzie Tripp-Molina
DEARBORN, MI
Leading Artist
Sponsored by Nancy & Stephen Einhorn



Lahna Vanderbush
NAGOYA, JAPAN
Leading Artist
Sponsored by Anne H. Vogel



Ben Zusi
SOUTH BEND, IN
Artist
Sponsored by Justin & Elizabeth Drew

*Deceased

OUR PEOPLE



Milwaukee Ballet II in *Moment*

MILWAUKEE BALLET II

Natalie Boese	Isabella Graves	Carly Jones	Emery Pierce
Alexander Boyd-Smith	Aurora Gray	Kiegan Kepner	Andrew Powell-Arellano
Federico Coletti	Ella Grimm	Emily Kneussle	Genevieve Raasch
Annika Ebbah	Fayeth Hartman	Rinka Matsuura	Roxy Slavin
Acaju Samael Chavez Gastelum	Ellen Hebgen	Ezra McPhie	Sergio Suarez
	Christina Henares	Jackson Mitchell	Remi Wagner†

†Deceased

MILWAUKEE BALLET ORCHESTRA

Flute Linda Nielsen Korducki* Dawn Lawler*	Horn Dana Sherman Kelly Hofman Parker Nelson*	Percussion Ryan Kahlbaugh Martin Shadd	Jane Rinka Anna Carlson Elizabeth Huffman
Piccolo Linda Pereksta*	Trumpet Donald Sipe Daniel Birnschein	Harp Ann Lobotzke	Viola Jamie Hofman Amanda Koch Olga Tuzhilkov* James Przygocki*
Oboe Jeremy Curtis* Bonnie Cohen	Trombone Jonathan Winkle* Kyle Samuelson*	First Violin Gerald Loughney <i>Assistant Concertmaster</i> Elizabeth Warne Alexander Ayers Christine Annin* Rachel Handlin* Sally Stephenson* Kristen Gorecki* Pamaela Simmons*	Cello Ravenna Helson Trischa Loebl Thomas Smith Scott Cook*
English Horn Bonnie Cohen	Bass Trombone Bradley J. Payne		Bass Michael Britz Charles Grosz*
Clarinet William Helmers* Christopher Zello	Tuba Daniel Neesley	Second Violin Katherine Brooks Nina Saito Edith Suetholz	
Bass Clarinet Christopher Zello	Timpani Terry Smirl		
Bassoon Monte Perkins Joshua Fleming*			

*Guest Musician

STAFF

EXECUTIVE LEADERSHIP

Michael Pink
Artistic Director

Tai Pauls
Managing Director &
Chief Advancement Officer

ADMINISTRATION & BUSINESS OPERATIONS

Joe Kallenberger
Operations & Facilities
Director

Mary Rask
Finance Director

Steven Ayers
Accounting Assistant

Joyette Bowen
Lead Receptionist

Liberty Sutter
Administrative Assistant

Diamond Arechavala
Kathryn Becker
Kaitlyn Drzewiecki
Claire Machata
Grace Miller
Abby Talley
Skye Williams
Michael Wininsky
Reception Staff

ADVANCEMENT

Ivana Bajic
Senior Development Manager

Tom Carter
Ticket Operations Manager

Hannah Cook
Marketing & Communications
Manager

Christine Duback
Events & Boutique Manager

Samantha Grambow
Grants Manager

Kirstin Hackbarth
Development Coordinator

Daniel Hernandez
Data Analyst &
Systems Administrator

Rachel Malehorn
Creative Content Manager

Sean McGibany
Patron Services Coordinator

Petra Delgado
Niall Brady
Sophia Gray
Sean Ogrosky
Interns

ARTISTIC & MUSIC

Mireille Favarel
MBII Artistic Director

Davit Hovhannisyan
MBII Rehearsal Director

Pasquale Laurino
Associate Conductor

Denis Malinkine
Rehearsal Director

Luz San Miguel
Rehearsal Director

Hikari Nakamura
Company Pianist

Andrews Sill
Music Director

Elizabeth Warne
Orchestra Manager & Librarian

EDUCATION & OUTREACH

Kristin Dimmer
Director School & Academy

Alyce Andrews
Head of Children's Division
Towne Centre Branch Manager

Natalie Dellutri
School Operations Coordinator

Rachel Howell
Senior Community
Engagement Manager

Alyx Johnson
School Programs Coordinator

Tatiana Jouravel-Malinkine
Head of Academy &
Pre-Professional Divisions

Glorimar Rosado-Febus
Registrar

Chelsie Septer
Education Administrator

Victoria Stevenson
Head of Student Division
Riverpoint Branch Manager

Melissa Alexander
Sejain Bastidas
Parker Brasser-Vos
Natalie Dellutri
Kristi DelVerne
Rachelle Fochs
Tali Grubor
Kelsie Kasky
Pedro Lapetra Miñana

Sloan Logsdon
Bri Lucey
Jenna Maule
Grace Miller
Lisa Moberly
Alyssa Mohler
Aisling Nussear
Katrina Oeffling
Casey Ott Thompson
Robyn Pearce
Maylu Pena
Natasha Posey
Feleacia Quezergue
Dawn Springer
Cathy Stadler
Natalie Stehly
Peggy Morgan Strimple

Garret Volpendesta
Baila Weiss
Maddie Westreich
Madyun Wilson
Faculty

Alan Borkenhagen
Dan Boudewyns
Grace Chesak
Simone Gheller
Vera Pawlak
Katherine Turner
Michael Wininsky
Accompanists

PRODUCTION

Libby Schultz
Production Manager

Mary Brennan
Assistant Stage Manager

Carly Coldren
Costume Assistant

Cecilia de Erausquin
Stage & Company Manager

Harlan Ferstl
Draper

Bradley Jostons
Head Carpenter

Dan Kampa
Master Electrician

Lyn Kream
Costume Coordinator

Mary Piering
Costume Manager

Christy Siebers
Wardrobe Supervisor

Kathryn Turner
Properties Master

Sue Crosby
Angeline Holtzman-Forbes
Barry Link
Carol Ross
Stitchers



Marize Fumero & Eric Figueredo in *Carmen*. Photo Nathaniel Davauer.

FINANCIALS

Fiscal Year 2025 was an exciting one at Milwaukee Ballet. Notably, it included the second year of Michael Pink’s new *Nutcracker*, increased enrollment in the School & Academy Pre-Professional Program, and a change to five weeks for the Summer Intensive program. The Legacy Fund quasi-endowment continues to generate unrealized gains on the investments as noted in operational revenue.

OPERATIONAL REVENUE

Contributed Revenue	\$2,555,915
Ballet Performances	\$2,468,904
School & Academy	\$2,041,553
Community Engagement	\$12,937
Interest, Net Retail & Other	\$425,364
Unrealized Gain on Investments	\$164,848
Gifts-In-Kind	\$343,935
Special Events	\$304,910

TOTAL OPERATIONAL REVENUE\$8,318,366

OPERATIONAL EXPENSES

Program Services

Ballet Performances	\$3,972,109
School & Academy	\$1,724,860
Community Engagement	\$422,039
Gifts-In-Kind Artistic	\$125,221
TOTAL PROGRAM SERVICES	\$6,244,229

Core Mission Support

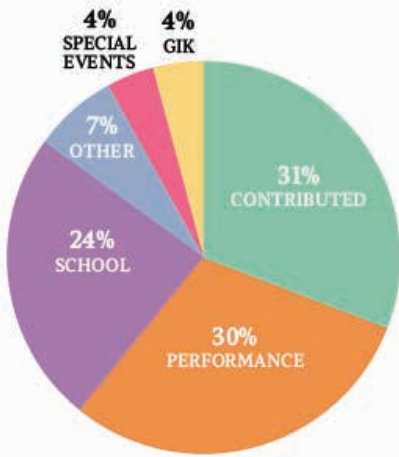
General & Administration.....	\$1,145,202
Marketing	\$550,332
Facility	\$433,907
Fundraising	\$316,634
Gifts-In-Kind & Administration	\$206,944
TOTAL CORE MISSION SUPPORT	\$2,653,019

TOTAL OPERATIONAL EXPENSES\$8,897,248

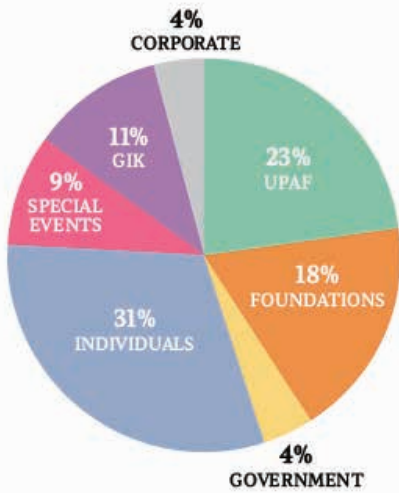
Change in Operational Net Assets	\$(578,882)
Depreciation	\$693,345
Change in Operational Net Assets	\$114,463
(before depreciation)	

The results as presented are preliminary and unaudited. Milwaukee Ballet’s audit reports are available at: www.milwaukeeballet.org/reports-forms-financials

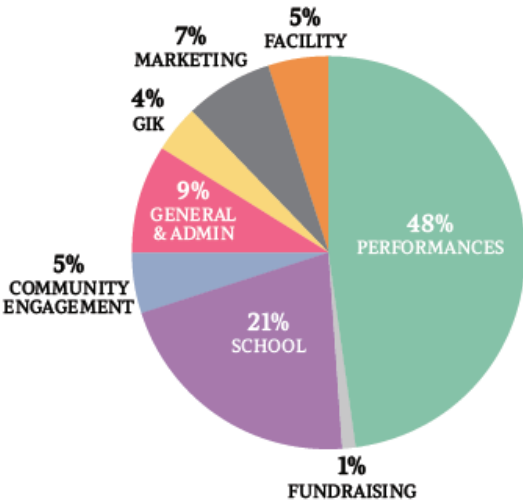
OPERATIONAL REVENUE



OPERATIONAL CONTRIBUTED REVENUE



EXPENSES



2024/25 SEASON

Milwaukee Ballet's 2024/25 Season of *Love & Lust* welcomed more than 44,000 audience members over 40 Company performances, including three world premieres.

The season opened with the Midwest debut of Kenneth Tindall's opulent *Casanova*, which was met with rave critical and audience acclaim. Michael Pink's reimagined *The Nutcracker* brought audiences into the spectacular world of Drosselmeyer's Imaginarium for its second year. The *MKE MIX* studio series featured works created by three of our own Artists, showcasing the creative and artistic range of the Company. Spring brought the return of the classical *Sleeping Beauty* for the first time in over a decade, with newly-named Leading Artist Marie Harrison-Collins and School & Academy alum Guest Artist Jennifer Hackbarth dancing the role of Aurora. The season concluded in dramatic fashion with the United States debut of Mark Godden's *Carmen*, alongside the world premiere of 2024 *Genesis* winner Tsai Hsi Hung's *In the Dark*, and the final bow from retiring longtime Leading Artist Barry Molina.

CASANOVA

NOVEMBER 1-3 | MARCUS PERFORMING ARTS CENTER

Choreographer: Kenneth Tindall

Music: Kerry Muzzey

THE NUTCRACKER

DECEMBER 7-24 | MARCUS PERFORMING ARTS CENTER

Choreographer: Michael Pink

Music: Pyotr Ilyich Tchaikovsky

MKE MIX

FEBRUARY 7-16 | BAUMGARTNER CENTER FOR DANCE

This Little Life

Choreographer: Amanda Lewis

I Do, Don't I?

Choreographer: Garrett Glassman

INTERLACE

Choreographer: Eric Figueredo

SLEEPING BEAUTY

APRIL 11-13 | MARCUS PERFORMING ARTS CENTER

Choreographer: Michael Pink

Music: Pyotr Ilyich Tchaikovsky

CARMEN

MAY 16-18 | THE PABST THEATER

Choreographer: Mark Godden

Music: Rodion Shchedrin after Georges Bizet

In The Dark

Choreographer: Tsai Hsi Hung

Music: Tzu-Chi Liu





MBSA Students in *The Giants Garden*.
Photo Nathaniel Davauer

SCHOOL & ACADEMY

Milwaukee Ballet School & Academy (MBSA) is the official school of Milwaukee Ballet providing exceptional professional dance training to children as young as 2 through 21 years. Through scholarships and financial assistance, we strive to make dance education available to all students who wish to join us, offering more than \$98,000 in tuition aid for 2024/25 school-year classes and Summer Intensive.

This year, School & Academy students performed in their year-end showcase, *The Giant’s Garden*, at the Oak Creek Performing Arts & Education Center. Academy level students presented their Academy Winter Showcase in January, displaying their versatility and depth of training during performances in the We Energies Performance Studio at Baumgartner Center for Dance.

Our Rolando Yanes Pre-Professional Program continued to flourish in its fifth year. Pre-Professional students held two productions throughout the year, showcasing the upcoming young talent within the rigorous program, with many performances sold out! The program’s impact on our talent pipeline continues, as five Pre-Professional students joined Milwaukee Ballet II.

The 2025 Summer Intensive saw increased male recruitment and new variations classes. Summer camp and intensive offerings continued to grow from last year and expanded to all our branch locations.

BY THE NUMBERS

SCHOOL YEAR

- 642 Students Enrolled
- 84 Zip Codes Represented
- 184 Classes

PRE-PROFESSIONAL PROGRAM

- 34 Students Enrolled
- 10 States Represented
- 29 Classes Offered Per Week

PERFORMANCES

- 171 Students in Company Performances
- 12 School Performances

SUMMER PROGRAMS

- 424 Students Enrolled in Classes and Camps
- 144 Students Enrolled in Summer Intensive
- 27 States and 4 Countries Represented
- 26 Summer Camps Offered

Milwaukee Ballet School & Academy is an accredited institutional member of the National Association of Schools of Dance (NASD).



Milwaukee Ballet Summer Intensive. Photo Natalie Dellutri.



MBSA Intermediate Division.



Milwaukee Public School Students in Milwaukee Ballet Residency Program.

COMMUNITY ENGAGEMENT

Milwaukee Ballet’s Community Engagement programming shares the joys and wellness benefits of ballet through Performance Access, Education & Training, and Accessibility programs.

This season, **Performance Access** opportunities included Student Matinees during *The Nutcracker* and *Sleeping Beauty* with discounted and subsidized tickets available to area school groups. Community groups of all ages were invited to view dress rehearsals throughout the season, and we continued our longstanding participation in Milwaukee Symphony Orchestra’s ACE program performing in area schools. Ballet Storytime continued to grow in popularity with our dancers leading ballet workshops in local libraries.

Our commitment to providing **Education & Training** throughout the community is exemplified through our Relevé program, which offers weekly in-school ballet training at three Milwaukee Public Schools. During the 2024/25 school year, we also ran Demi Pointe residencies offering ballet classes to 2nd, 3rd, and 4th grade students at two Milwaukee-area schools, continued our partnership with Boys & Girls Club through their Movement Matters initiative, and offered Discover Dance Camps during Spring Break and Summer.

For over a decade, our **Accessibility** programming has been highlighted by Tour de Force adaptive ballet classes for young dancers of all abilities. This year, the program continued with a Fall session, serving students with varying levels of mobility. We also launched a new partnership with Gigi’s Playhouse offering programming to children with Down’s Syndrome. The annual Sensory-Friendly *Nutcracker* performance brought our largest audience ever, and we continued our partnership with the SPARK! Alliance, sharing dance with individuals coping with memory loss and their caregivers.

BY THE NUMBERS

PERFORMANCE ACCESS

- 5,856 Student Matinee Attendees
- 1,782 Students at ACE Programming
- 1,360 Ballet Storytime Participants

ACCESSIBILITY

- 39 Tour de Force Students
- 765 Sensory-Friendly *Nutcracker* Attendees
- 4 SPARK! Alliance workshops

EDUCATION & TRAINING

- 222 Relevé Students
- 175 Demi Pointe Residency Students
- 150 Boys & Girls Club Students
- 115 Discover Dance Camp Students

TOTAL IMPACT

- 453 Classes and Events
- 13,318 People Reached Through Programming



Garrett Glassman during Sensory-Friendly *Nutcracker*.



Discover Dance Camp Students.



Artistic Director Michael Pink at the 2025 Ballet Ball: En Fuego.

SUPPORTERS

INDIVIDUAL GIVING

DIRECTOR CIRCLE

VISIONARY | \$10,000+

\$100,000+
Donald & Donna Baumgartner

\$50,000-\$99,999
Clair* & Mary Baum
The Estate of Gary Drescher*
Kathleen & Donald Wilson

\$25,000-\$49,999
Tony & Andrea Bryant
Robert Dohmen
Heil Family Foundation
Susanna & Justin Mortara
Dr. George Sosnovsky Charitable Trust

\$10,000-\$24,999
Anonymous
Laura & Mike Arnow
Bob Balderson
John P. Baumgartner
Jane Bell
Curt & Sue Culver
Einhorn Family Foundation
Greater Milwaukee Foundation
- William A. & Mary Bonfield, Jr. Fund
- Norman & Lucy Cohn Family Fund
- Sarah & Richard Kimball Fund
- Virginia Booth Vogel Fund
Christine & Tom Irgens
Stanley Kritzik
Sheldon & Marianne Lubar
Barbara Mangiafico
Dr. Ann & Mr. Michael* McDonald
Anne E. Oberbeck
Lois & Richard Pauls
Candy & Bruce Pindyck
William & Margaret Raasch
John Rumpf & Audra Johnson
Linda L. Sell, M.D.
Melissa & David Songco
Richard & Ann Teerlink
Maxine Wishner
Richard & Kay Yuspeh

CHAMPION | \$5,000-\$9,999
Anonymous (2)
Margaret Atherton & Robert Schwartz
Sheila Baker & Rick D'Aloia
Sally Jarrar Baumgartner
Liz & Scott Bickley
Jon & Perrin Biorkman
Cheryl & Stuart Carron
Kristine Cherek & Kirk Larsen
Adam H. Christian & Rachel J. Bloch
Catherine & Mario Costantini
Kathleen Allen Crocker
Rick & Paula Cudahy
Sarah & Peter Damsgaard
Catherine L. Davies
Kristin & Jordan Dimmer
Lori Erickson & John Bell
Suzy B. Ettinger
Anne & Patrick Fee
Tim & Sue Frautschi
Jason & Wanetta Fricke
Elizabeth & Frederic* Friedman
Greater Milwaukee Foundation
- Bobbi & Jim Caraway Fund
- Fedorczyk Family Fund
- David C. Scott Foundation Fund
Laura & Tom Gough
Charles & Elizabeth Haas
Amy Schmidt Jones & Andrew Jones
Dick Kaul
Mary Ann & Charles LaBahn
The La Macchia-Parker Family Fund
Dr. Suzanne Martens
Beverley & Paul Morgan
Molly & Maggie Mulroy
Richard Niespodziani
Kelly, Karina & Wyatt Noyes
Stacey & Steven Nye
Tai & Andrew Pauls
Jodi Peck & Les Weil
Jill G. Pelisek
Andrea & John Psaras
Jeffrey & Wende Raasch
Christine Radiske & Herbert Quigley
Jodi Ristau
Kathleen D. Ryan
Lacey Sadoff
Kathleen & Frank* Thometz
Wilfred W. Wollner Jr.
Kevin & Tiffany Zaba

DANCER CIRCLE

PRINCIPAL | \$2,500-\$4,999
Anonymous (2)
Alycia Aldaz
Kathy & Dave Averbeck
Lori & William Bonifas
Krista & Christopher Boyce
Dr. Ulrich Broeckel & Lina Li
Shirley E. Butzin*
Mark & Sharon Cameli
Justin & Elizabeth Drew
Kimara & Chad Ellefson
Ian & Kristy Elfe
Stephen, Amanda & Paige Elliott
Alison Flynn Gaffney
Bob & Joan Goodman
Greater Milwaukee Foundation
- Briggs & Stratton Fund
- Schomer Lichtner Scholarship Fund
Sarah Gremontprez & Graham Hill
George A. Hanneman*
Carla H. Hay
Michael & Mary Ignatowski
Dierdre & Joshua Laterman
Eileen & Barry Mandel
Gregory & Susan Milleville
Dr. Barry Mullen
Daniel Naumann & Eileen Brennan
Otho Kile Jr. Charitable Trust
Sarah Thomas Pagels
Kerri Jo & Robert Patten
Jan Pirozzolo-Mellowes & John Mellowes
Corrie & David Prunuske
Robert Ragir & Adriana Pilia
Marcia J.S. Richards
Rebecca & Maxx Rodriguez
Gayle G. Rosemann & Paul E. McElwee
Michael D. Ryan
Jane & Eric Schumann
Mark & Julie Steinhafel
Cherie & John Swenson
United Way of Greater Milwaukee & Waukesha County
- Nicole & Jack Cook
Doug Stahl & Ann Windsor
Marshall Zarem

SUPPORTERS

CORPS DE BALLET | \$1,000-\$2,499

Anonymous (3)
Molly & Ben Abroham
Mary McGinn Alderson
Carol Alexander
David & Patricia Anderson
Irissol Arce
Jason & Sarah Babcock
Christine Beck & James Wilkinson
Linda E. Benfield & Steven C. Wallace
Elizabeth & Jeff Billings
Heather & David Binder
Julie Heuer Brandt
Joan & Fred Brengel Family
Foundation, Inc.
Kristyn Brenner
Jose Carlino
Dr. Louis Chicquette
Rev. David E. Cooper
Margaret B. Crosby
Penny Cruse
Tina DeGustino
Ellen & Gerald DeMers
Judges John & Jean DiMotto
Regina & Roger Dirksen
Buffy & Steve Duback
Tere Canton Eckrose
Robert & Faith Einhorn
Paul Faustino & Charles Barlow
Jeff & Kelly Fitzsimmons
Pamela H. Frautschi
Meggan Friedman & Sam Valenzisi
Greater Milwaukee Foundation
- Joan & Peter W. Bruce Fund
- George & Joan Hoehn Fund
- Joseph R. Pabst Fund
- James A. Schleif & William H. Morley Charitable Fund
- Drs. George & Christine Sosnovsky Fund
- Wiberg Family Fund
Peter & Sarah Hammond
Xiaoting Hao & Daniel Neely
Liv & Wayne Heidenreich
The Chris & Katie Hermann Family
Ellen Hing & Chris Leadley
Hannah & Jason Jahn
Gretchen & Leon Jameson
Tracy & Jim Johnson
David Kalan
Peggy Kelsey & Michael Teich
Laurie J. Kirsch & Rodney J. Gasch
Glenn A. Kleiman & Gisela Terner
Leslie Kohler
Jason Kohout

Ward Komorowski
Helen Kuzma
Mary E. Lacy
Bridget & Luke Larson
Dr. & Mrs. David L. Larson
Emilia & Christopher Layden
Susan Liedtke
Cynthia Lien M.D.
Laura Lindner
Ravenna & Randy Lipchik
The Kristine & Andrew Lize Family
Patricia A. Lombardo
Carrie & Paul Matteson
Rose Mary & Frank Matusinec
Mr. & Mrs. Mayer
James McFarland &
Jaime Sebastian Andres
Carole McGibany
Jean Baumgartner McGrath
Patty McNichols
Elizabeth Mengo
Anne & Tom Metcalfe
Becky & Ron Mitchell
Erin & Henry Munez
Michael & Susan Neemann
Jane Neumann
Laurie Ocepek
The Maya Owens Special Needs Trust
Vera Pawlak
Gil & Beth Peri
Anthony Petullo Foundation, Inc.
Mary & Ross Read
Anne Riendl
Matthew & Marianne Robbins
Peggy & Scott Sampson
Keri Sarajian, Rick Stratton & Family
Bryan & Julia Schultz
Jan Serr & John Shannon
Pamela & Jeffrey Shovers
SixSibs Foundation
Heidi & Kevin Sjostrom
Joan & Todd Smasal
Judson & Amy Snyder
Barbara Steinmetz
Thomas & Sharon Stoffel
Fred Stratton & Deborah Ridley-Kern
Karin Swartz
Benjamin P. Teich & Sophie A. Bice
Stephanie Thompson
Morgan J. Tilleman
Lori, Chuck, Jennifer &
Catherine Torner
Lauren & David Torres
Katie & Brian Trexell
Joan R. Urdan

Andrew & Tracey Wadsworth
Mark & Anne Weitenbeck
Jerome & Bonita Welz
Faye & Richard Wetzel
Diana J. Wood
Ed & Diane Zore

APPRENTICE | \$500-\$999

Anonymous (4)
Melissa & JC Alexander
Eric April & Jason Buskell
Robert A. Armstrong
Adam & Rachel Arndt
Jacqueline Herd-Barber &
Michael Barber
Laura & Mark Barnard
Richard & Shirley Behrendt
Carolee C. Beutler
Patty Blommer & Tim Wallis
Bill & Barbara Boles
Peter & Shar Borg
Dr. Rick Brewer
Peter & Laurie Byrne
Susan Hulce Cerletty
Janice & John Collins
Lisa & Bob Collins
Brian & Hillary Cothroll
Christine Czernejewski
Barbara C. Davis
Amy Diorio
Beth & Ted Durant
Debra & Jonathan Eder
Jason & Katie Eggert
Rosemarie D. Eierman
David Eggert
Lisa Ellegard
Jolly Emrey
Alexandra & Dan Fee
Chris Fieldbinder
Jonathan Fitzsimmons & Nora Gierke
David & Susie Fondrie
Janet & Stanley Fox
Mary Ellen & Allan Froehlich
Constance Ganapes MD &
James Mazzulla MD
Drs. Mark & Virginia Gennis
Faye Giesemann
Leonard & Sandy Golden
Shari Grahovac
Christine & David Grimm
Greater Milwaukee Foundation
- Margarete & David Harvey Fund
- Mary & Charles Kamps
Scott & Linda Haag
David & Chintana Haas

Victoria & Matt Haas
Tasha Hamilton
Richard & Sara Hariman
Jeffrey Heil
Jodi & Sam Hogerton
Dr. Gary Hollander
Anthony & Jamila Hudson
Ann & Immari Hysaw
Jewish Community Foundation
- Jerry & Alice Jacobson
- Pam Kriger
- Burton & Audrey Strnad
Mike Jones
Kathleen & Robert Juday
Tim & Robin Kneprath
Eric Krismer
William & Elizabeth Krohn
David Kudlata & Miles Underwood
Tina Kummrow
Drs. Alysandra & Dave Lal
Kevin Langreck
Mara Lord & Kip Milligan

Peter Lovance
Kent & Susan Lovern
Tracy Luber & Gil Southwell
Wayne & Kristine Lueders
Ann R. MacIver
Lee C. Marquardt
Jeff Marshall
Cassandra & Kevin McCauley
Suzanne & Matthew McNeill
Elizabeth & Mark Miller
Jim Mortell
Jennifer Northouse
Elizabeth Odian & Piotr Wasiak
Steve & Amy Olsen
Kathleen & Thomas O'Mara
Maggey & David Oplinger
Joseph Pabst & John Schellinger
Mary Wilkins Peterson
Breanna Radke
Stacey & Steve Radke
Reinhold Charitable Fund
Amanda & Brent Ritchey

Agnes, Jaron & Chuckie Sangsomwong
Kay Schanke
James & Kathleen Scholler
Rachel & Jay Sherman
Lyn Slater
Sarah Sobeck
Alison Steinhafel
Rachel & Adam Sternberg
Amy Strother
Fran & Joe Sutter
Steve & Honey Szymanski
Monica Tabet
Bruce Tilley
Melissa & Brent Tischler
Joy Towell
Natalie Udvare
Corinthia Van Orsdol & Don Petersen
Rebecca & Mark Wanek
Beth Weirick
Brenda Wood & Joel Haubrich

LEGACY FUND GIFTS

Anonymous (2)
Charles & Dorothy Airing*
Charitable Remainder Trust
Clair* & Mary Baum
John Burke

Lois Malehorn
Barbara J. Michaels*
Janice E. Schaefer, Ph. D.
Nita Soref*
Mary Vandenberg & Keith Mardak

The Estate of Donald R. Whitaker*
Marshall Zarem

ENCORE SOCIETY

We thank our supporters who donate through planned giving.

Charles & Dorothy Airing*
Charitable Remainder Trust
Raymond Albright*
Rita R. Anderson*
Bob Balderson
William A. & Mary Bonfield Jr.*
Barney Brumm*
Shirley E. Butzin*
Dr. Lucile Cohn*
William Debelak*
Arleen L. Dettlaff*
Milicent Dewes
Milton F. Disch*
Mary Dohmen*
Terry J. Dorr
Gary Drescher*
Ralph Eder*
Rosemarie D. Eierman
Barbara Eiseman*
Jason C. Fricke

Josef A. Fruechtl*
Marvin Haesle*
Timothy Hess
Audrey B. Hintz*
Charlotte Howard*
Robert Kloes
Laura Krause
Irving A. Lore*
Carolyn S. McGregor*
Anne Metcalfe
Harriet S. Merten*
Barbara J. Michaels*
Joan E. Moeller*
Anne E. Oberbeck
Mariette C. Orth*
Margaret Pearson
Milena M. Pesak*
Elaine N. Peterson*
Cynthia J. Krueger Prost
Albert E. Rinehart*

Barbara Roth
Robert Ruffalo*
James & Kathleen Schoeller
Legacy Fund
Mary Ann & John Schroeder
Nita G. Soref*
Dr. George Sosnovsky Charitable Trust
Henry H. Uihlein, Jr.*
June Vrsata*
Waukesha County Community
Foundation
- Early Hill Fund
Audrey Wegner*
Rita G. Wesland*
The Estate of Donald R. Whitaker*
Joan Wiegand*
Jane R. Will*
Gregg & Julie Willis

SUPPORTERS

CORPORATE, FOUNDATION & GOVERNMENT

\$100,000+

BMO
The Cudahy Foundation
The Lynde & Harry Bradley Foundation
Herzfeld Foundation
United Performing Arts Fund

\$50,000-\$99,999

Foley & Lardner LLP
Froedtert & Medical College of Wisconsin
MPS Partnership for the Arts & Humanities
The Shubert Foundation, Inc.

\$25,000-\$49,999

Bader Philanthropies
Nita Soref 2006 Charitable Trust
Studio Gear
von Briesen & Roper, s.c.

\$10,000-\$24,999

Anonymous
Phillips Ristau Group at Baird
Ruth Foundation for the Arts
Sensient Technologies Foundation
Bert L. & Patricia S. Steigleder Charitable Trust
The Paula Steiner Charitable Trust
Wisconsin Arts Board

\$5,000-\$9,999

Advanced Restoration, Inc.
Brewers Community Foundation
Diamonds Direct
Ralph Evinrude Foundation, Inc.
Godfrey & Kahn, S.C.
Johnson Controls Foundation
Jones Lang LaSalle Inc.
Laffey, Leitner, & Goode LLC
Milwaukee Arts Board
Milwaukee County CAMPAC
Northwestern Mutual Foundation
Old National Bank
Jane Bradley Pettit Foundation
Gene & Ruth Posner Foundation
Sazama's Fine Catering
Versiti, Inc.
Viking Cruises
We Energies Foundation
Wellspring Construction Group
Wisconsin Public Radio

\$2,500-\$4,999

The Bartolotta Restaurants
Catalyst Construction LLP
Charter Manufacturing Company
The Gardner Foundation
Evan & Marion Helfaer Foundation
PNC Financial Services Group

\$1,000-\$2,499

Albert J. & Flora H. Ellinger

Foundation, Inc.
Greater Milwaukee Foundation
Happy Joy Candy Floss
Husco
Integra Physical Therapy & Personal Training
The Marek Group
Morgan Stanley GIFT
Charles D. Ortgiesen Foundation
The John Oster Family Foundation
Radish MKE
Rockwell Automation
Steinway Society of Milwaukee, Inc.
Synopsis

\$500-\$999

Allen Edmonds Corporation
Deep River Partners Ltd.
The Dessert Cart
Florentine Opera Company
FPC Live
Graphicolor Printing
Husch Blackwell LLP
Lauren Kreibich Photography
Michael Best & Friedrich LLP
Molson Coors
Northern Lakes Financial Group
The University Club of Milwaukee
William Blair
X-Golf at American Family Field



Milwaukee Ballet is a proud Cornerstone Member of the United Performing Arts Fund.

We are deeply grateful to the United Performing Arts Fund (UPAF) for sustaining the vibrant arts that make our community special. Thanks to UPAF, organizations like us can keep creating, performing, educating, and inspiring.

Thanks to UPAF and their generous supporters, Milwaukee Ballet is proud to say:

- 68 performances were possible this season
- More than 60,000 people experienced a performance or education experience
- 46 Company and Milwaukee Ballet II dancers were employed
- 100% of these dancers lived locally

Support from UPAF's Bright Minds helps make Education & Training programs possible:

- 222 Relevé students had free, weekly ballet class
- 175 students in Demi Pointe Residency program
- 285 instructional hours provided
- Zip codes served: 53208, 53204, 53207, 53215
- Partner schools serve families who are primarily economically disadvantaged

VOLUNTEERS

Thank you to the many volunteers who donate their time and talents.
Learn more about volunteer opportunities online at www.milwaukeeballet.org/volunteer.



Danielle Adisi
Betty Allen
Elizabeth Arnold
Eric Arsnow
Shana Baldassi
Sara Baumgartner
Laurie Becerra
John Bell
Meredith Berry
Christopher Berry
Elizabeth Beyer
Schwartz
Sophie Bice
Chelsey Bradley
Sarah Carstens
Rosanna Casper
Randum Chay
Michael Chay
Min Chen
Hannah Chin
Sarah Chow
Kristin Ciezki
Caley Clinton
Whitney Cole
Amy Connolly
Audrey Cook
Karen Cooper
Cristina Curran
Flemming Daugaard
Hansen
Margaret Davis
Valerie Deal
Nicolette Deveneau
Tere Eckrose
McKenzie Edmonds
Kristina Elfe
Amanda Elliott
Jennifer Engelking
Lori Erickson
Lea Fanella
Lauren Feldmann
Olivia Feldmann
Erin Fergusson Frey
Kyle Freund
Kseniya Fuhrman
Corey Fuhrman

Amy Galati
Melissa Garves
Courtney Gilligan
Sheila Glynn-Criqui
Kristin Godfrey
Jazmin Gonzalez
Deborah Grayeski
Kristen Grow Bauer
Carol Hackbarth
Tasha Hamilton
Sara Hariman
Richard Hariman
Tricia Hastings
Caleb Hawkins
Lauren Head
Geneva Hebron
Shirley Henika
Joseph Henika
Bobbi Jo Henke
Lexie Higgins
Kyle Higgins
Michelle Hobbins
Stephanie Hobbins
Margaret Holtgreive
AnnMarie Hoyme
Lara Huber
Elizabeth Jablonski
Julie Jahn
Morgan Jones
Elizabeth Kelcey
Kalumbula
Kasongo Kalumbula
Sharon Kevil
Andrea Khan
Amanda Koehler
Magdalena Kolosovsky
Kimberly Kotarski
Jenny Kovach
Kelly Kuehn
Samantha Kuhl
Kristina Larson
Jessica Lawrence
Angela Lemke
Alicia Levin
Erin Lewenauer
Jenn Lindsay

Wei Liu
Kristine Lize
Andrew Lize
Claire Machata
Teresa Maier
Nicole Maki-Rydland
Ruzica Malich
Kathryn Malin
Kay Martine
Mary Mayne
Callum Mayne
Kristy Mazurek
Andrew Mazurek
Kayla McCann
Molly McCarthy
Erin McReynolds
Melanie Melville
Elizabeth Mengo
Rebecca Miksch
Candice Milan
Cathy Miller
Colleen Mittag
Laura Mohr
Sara Mornar
Wendy Mueller
Michelle Mueller
Nurilla Nataliansyah
Shay Nizer
Jennifer Northouse
Kelly Noyes
Jennifer Nyman
Michael O'Loughlin
Gerald Omernick
Kristin Paltzer
Gehres Paschal-Bellini
Gwenn Peters
Sarah Plamann
Jayme Radomski
Kimberly Ridolfi
Caryl Roberts
Alexa Robertstad
Charles Roedel
Kate Rottier
Claudia Ruiz Wiske
Nicole Ruiz-Nguyen
Jennifer Sarnowski

Karla Schmidt
Wes Schultz
Cathy Seasholes
Sarah Seibt
Richard Seibt
Dan Simmons
Lindsey Skaife
Trevor Skaife
Melissa Songco
Maggie Soo
Mary Spicuzza
Amanda Stein
Megan Steinfeld
Rachel Sternberg
Beth Stoddard
Lisa Talen
Luke Talen
Ben Teich
Diane Terry
Stephanie Thompson
Cristina Tolley
Maryjo Travis
Jodi Tremarello
Jamie Vallejo
April Vaughn
Brittany Vierck
Rebecca Wanek
Christine Welland
Amanda Welter
Maryann Weston
Anna Wichgers
Stephanie Wickman
Tiphany Wiley
Emily Wirth
Melissa Wirth
Brigid Wollersheim

THE 2024/25 SEASON IS PRESENTED BY

DONALD & DONNA
BAUMGARTNER



UNITEDPERFORMINGARTSFUND

WITH SUPPORT FROM



The Phillips
Ristau Group



The Cudahy Foundation



Herzfeld
Foundation



Partnership for the
Arts and Humanities



NITA SOREF
2006 CHARITABLE TRUST

Studio Gear
Event Production • Equipment Rentals

vonBriesen
von Briesen & Roper, s.c. | Attorneys at Law



This season is supported in part by grants from the Wisconsin Arts Board and Milwaukee Arts Board with funds from the State of Wisconsin and the National Endowment for the Arts.